

Cutting and Folding

————— A solid line = cut around

- - - - - A dotted line = score and fold

AproDerm® Sheet 1 of 3 = The Body and Arms

Please follow the instruction sheet on page 3 for guidance.

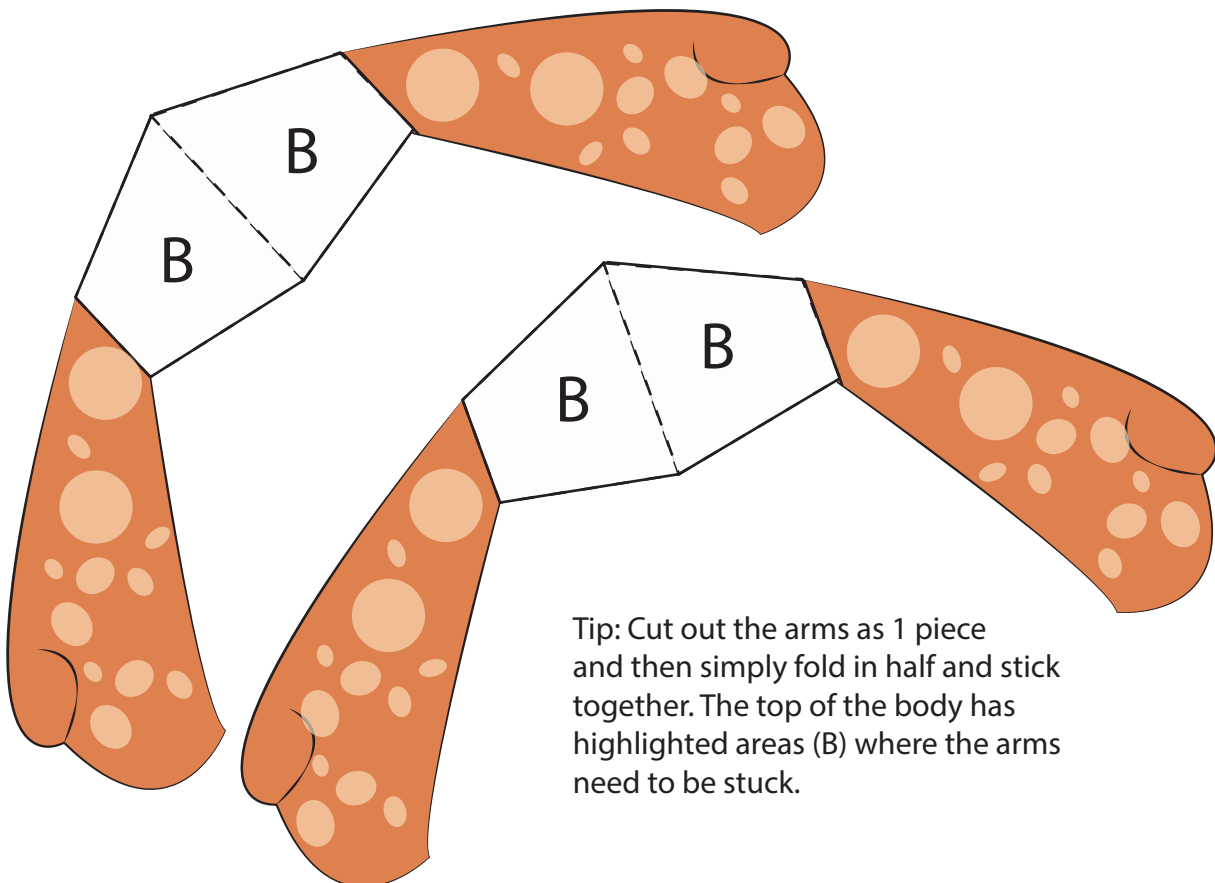
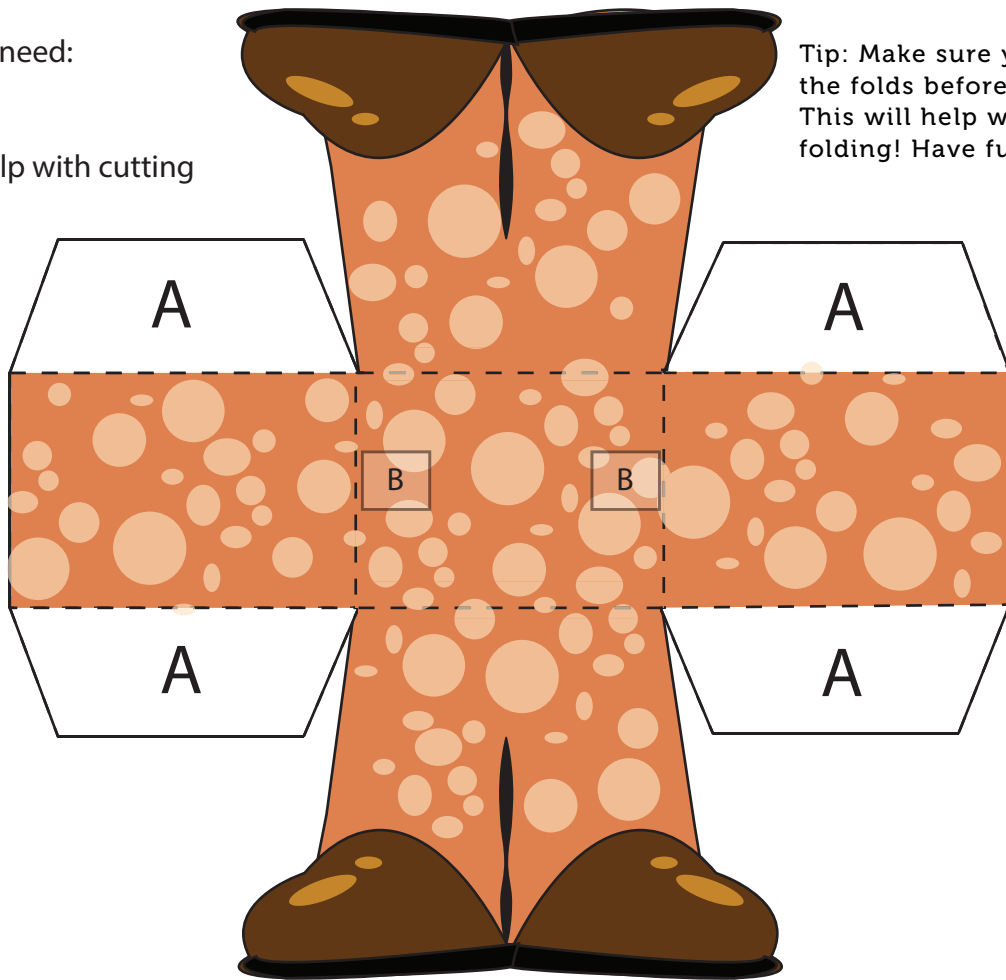
What will you need:

Scissors

Glue stick

An adult to help with cutting

Tip: Make sure you score the folds before cutting. This will help with easy folding! Have fun



Tip: Cut out the arms as 1 piece and then simply fold in half and stick together. The top of the body has highlighted areas (B) where the arms need to be stuck.

Cutting and Folding:

———— A solid line = cut around

- - - - A dashed line = score and fold

AproDerm® Sheet 2 of 3 = The Head and Eyes
Please follow the instruction sheet on page 3 for guidance.

What will you need:

Scissors

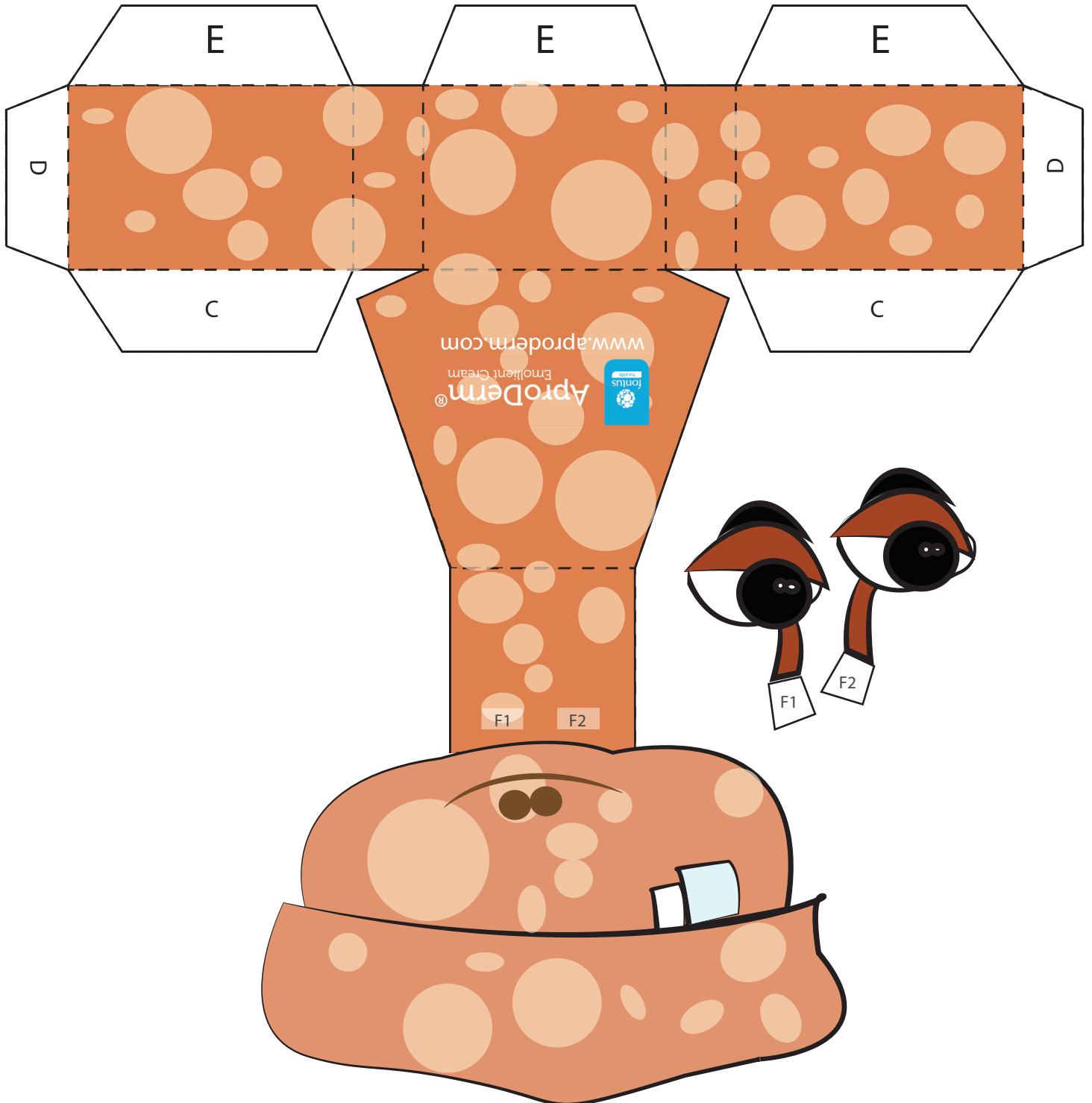
Glue stick

An adult to help with cutting

Tip: Make sure you score the folds before cutting.

This will help with easy folding!

Have fun



Captain Apro Instruction Sheet

What you will need:

- Pair of scissors
- Glue stick
- A grown up to help with the cutting
- An empty cereal box (optional)
- A4 sheet of paper – 120g weight*

*It is recommended that you use this paper weight to print on so that you get a sturdy Captain Apro, however, if you don't have this don't worry, once you've printed the sheet you can glue it onto a cardboard cereal box for extra strength.

Section 1.1 – Body

1. Carefully cut along the solid lines.
2. Fold along the dotted lines of Captain Apro's legs.
3. Fold down both sides of Captain Apro's legs.
4. Fold back flaps A and glue to the front and back of Captain Apro's legs.

Section 1.2 – Arms

1. Carefully cut along the solid lines of the arms.
2. Fold flaps B in half (along the central black dotted line) and glue the two sides of the arms together - you now have one complete arm.
3. Repeat step 2 for the second arm.
4. Once both arms have been folded and glued, stick flaps B to body labelled area B with the arms pointing in the same direction or opposite ways if you want Captain Apro in the flying position!!

Section 2.1 – Head

1. Carefully cut along the solid lines.
2. Fold back flaps D along the dotted lines
3. Fold flaps C and glue to the inside of Captain Apro's back (hint – the bit that says AproDerm)
4. Fold Captain Apro's head down and glue onto flaps D
5. Fold Captain Apro's face down and glue onto flaps E

Section 2.2 – Eyes

1. Carefully cut along the solid lines.
2. Fold down flaps F1 and F2
3. Glue flap F1 onto box area F1
4. Glue flap F2 onto box area F2

Now attach section 1 (Body) to section 2 (Head) and you have your very own Captain Apro to play with. Have fun!