

Cutting and Folding

————— A solid line = cut around

- - - - - A dotted line = score and fold

AproDites Papercrafts Itchii - Sheet 1 of 3 - The Body
Please follow the instruction sheet on page 3 for guidance

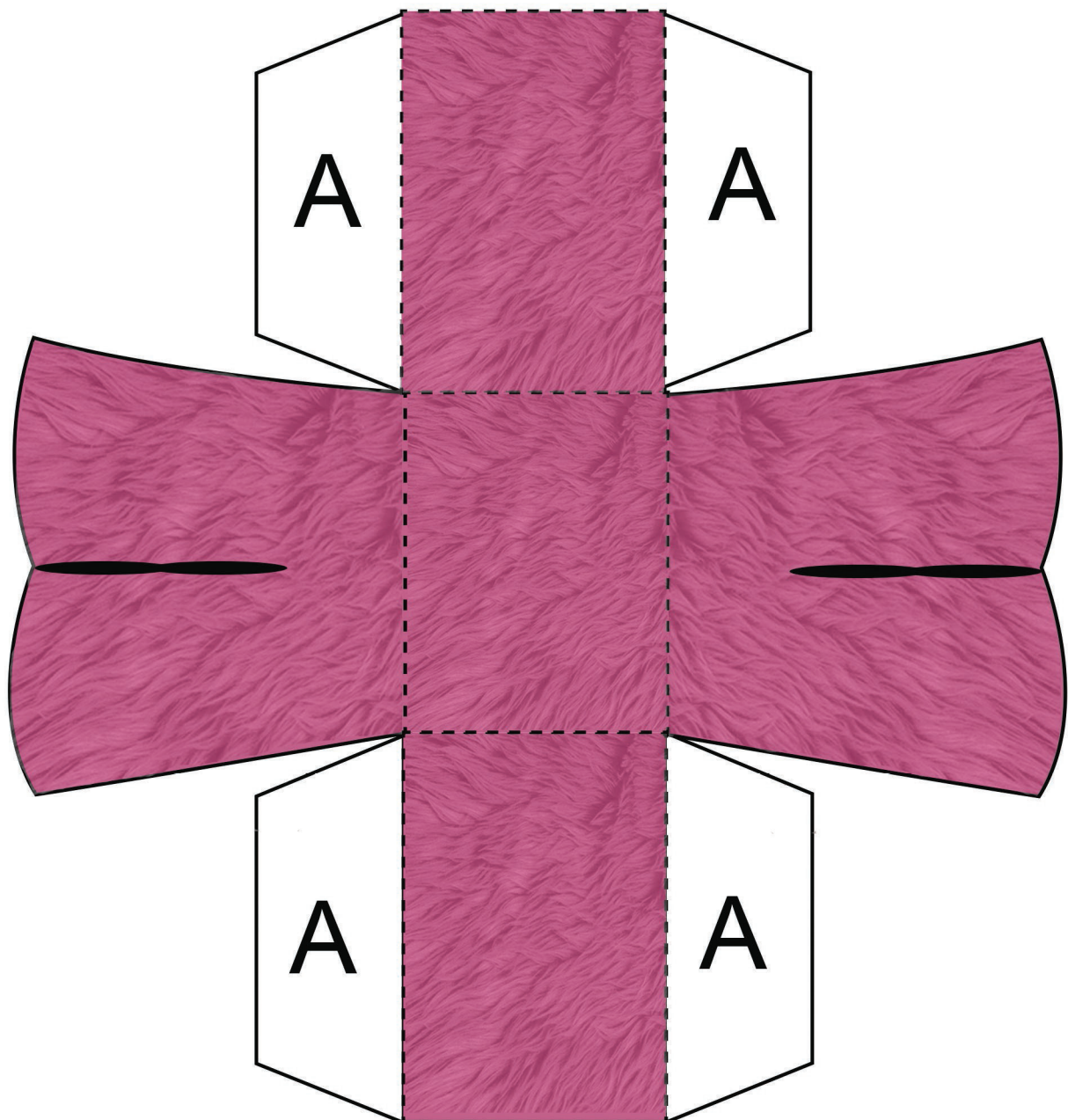
What you will need:

Pair of Scissors

Glue Stick

An adult to help with cutting

Tip: Make sure you score the folds before cutting.
This will help with easy folding. Have Fun!



Cutting and Folding

————— A solid line = cut around

- - - - - A dotted line = score and fold

AproDites Papercrafts Itchii - Sheet 2 of 3 - The Head and Arms
Please follow the instruction sheet on page 3 for guidance

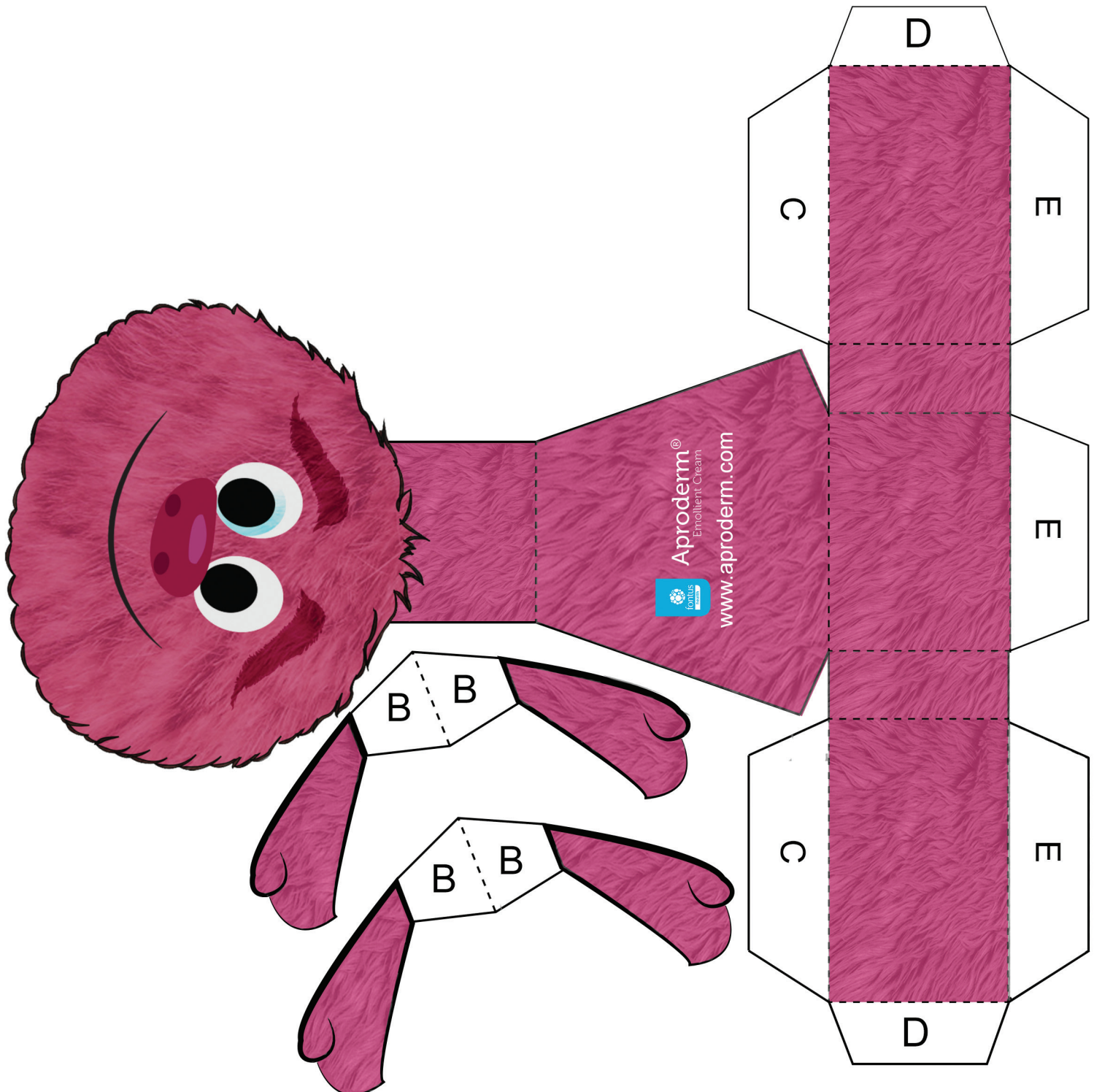
What you will need:

Pair of Scissors

Glue Stick

An adult to help with cutting

Tip: Make sure you score the folds before cutting.
This will help with easy folding. Have Fun!



Itchii Instruction Sheet

What you will need:

- Pair of scissors
- Glue stick
- A grown up to help with the cutting
- An empty cereal box (optional)
- A4 sheet of paper – 120g weight*

*It is recommended that you use this paper weight to print on so that you get a sturdy Itchii, however, if you don't have this don't worry, once you've printed the sheet you can glue it onto a cardboard cereal box for extra strength.

Section 1.1 - The Body

1. Carefully cut around the solid lines
2. Fold down the front and back of Itchii's legs
3. Fold down both sides of Itchii's legs
4. Fold back flaps A and glue to the front and back of Itchii's legs

Section 2.1 - The Arms

1. Carefully cut along the solid lines of the arms
2. Fold flaps B in half (along the black dotted line) and glue the arms together
3. Repeat step 2 for the second arm
4. Once both arms have been folded and glued, keep them aside as you will need to stick flaps B to Itchii's body, which you will be making next

Section 2.2 - The Head

1. Carefully cut along the solid black lines
2. Fold flaps C and glue to the inside of Itchii's back (hint - the bit that says AproDerm)
3. Fold down flaps D and attach them to the top of Itchii's head
4. Fold down Itchii's face and attach to all 3 E flaps

Now attach section 1 (body) and section 2 (head and arms) together and you have your very own Itchii to play with. Have fun!